

# DOMINATOR SAFES™

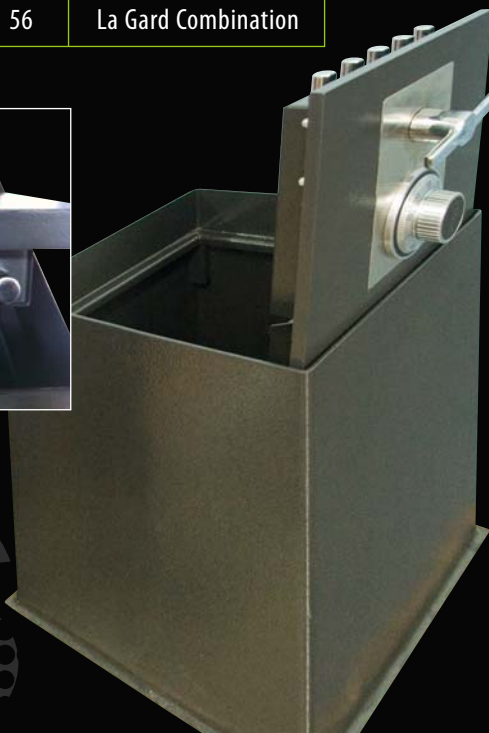
The Dominator Safes™ in-floor series ensures both ends of the size and volume scale are catered for. With the compact design of the direct-locking DF-1, to the underground vault and double-sized DF-4.

Up to five plated locking bolts and secondary locking pins seal the doors of the DF series and ensure that concealing your safe isn't the only protection it offers against theft.

## FEATURES:

- La Gard Group 2 rated 3-wheel combination lock - optional upgrade to electronic lock
- 5 point hardened locking bolts (excludes DF-1)
- Spring loaded relocking system
- Gas strut door lift assist (excludes DF-1)
- Flush mount hinging
- Cover plate for concealing location
- Durable powder coat finish
- Reinforced base plate for secure installation
- Solid 25mm thick steel door makes the prospect of forced entry extremely unlikely

Model	External Dimensions H x W x D	Weight kg	Lock Type
DF-1	261 x 261 x 318	21	La Gard Combination
DF-2	344 x 379 x 299	39	La Gard Combination
DF-3	344 x 379 x 445	42	La Gard Combination
DF-4	362 x 616 x 457	56	La Gard Combination



# in-floor safes

[www.dominatorsafes.com.au](http://www.dominatorsafes.com.au)

Contact: